



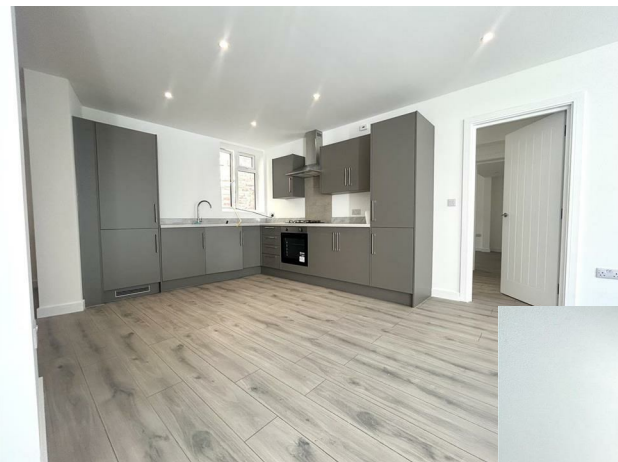
## Park Road, Sandy

£1,250

- Ground Floor flat
- Ample Storage
- Deposit: £1442

- 2 Double Bedrooms
- Allocated parking Space
- Available End Mar/Apr

- Open plan Living/kitchen/Diner
- EPC: C



## Viewings

Viewing requests by EMAIL ONLY - completed application form required

## Council Tax Band

TBC - New build

## EPC Rating:

C

Energy Efficiency Rating		
	Current	Potential
<i>Very energy efficient - lower running costs</i>		
(92 plus) <b>A</b>		
(81-91) <b>B</b>		
(69-80) <b>C</b>	<b>77</b>	<b>77</b>
(55-68) <b>D</b>		
(39-54) <b>E</b>		
(21-38) <b>F</b>		
(1-20) <b>G</b>		
<i>Not energy efficient - higher running costs</i>		
<b>England &amp; Wales</b>	EU Directive 2002/91/EC 