



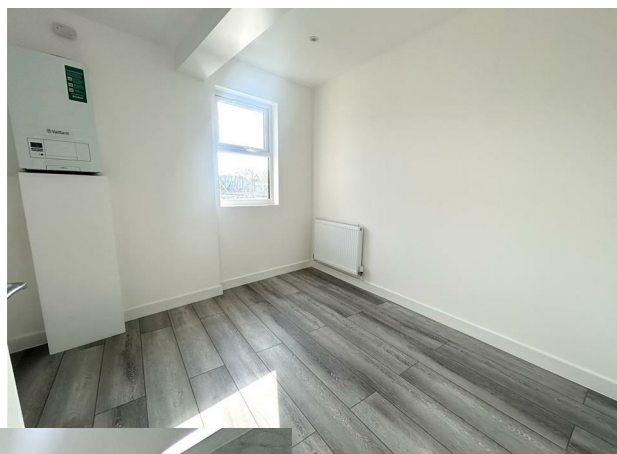
Park Road, Sandy

£1,100

- 2 Double Bedrooms
- Gas Central Heating
- Available April

- Large Open plan Kitchen/Living room
- EPC: C

- Fully integrated Kitchen
- Deposit: £1269.23




Viewings

Viewings by email only - please complete an application form to be considered

Council Tax Band

TBC

Energy Efficiency Rating		
	Current	Potential
<i>Very energy efficient - lower running costs</i>		
(92 plus) A		
(81-91) B		
(69-80) C	73	73
(55-68) D		
(39-54) E		
(21-38) F		
(1-20) G		
<i>Not energy efficient - higher running costs</i>		
England & Wales	EU Directive 2002/91/EC 	

EPC Rating:

C