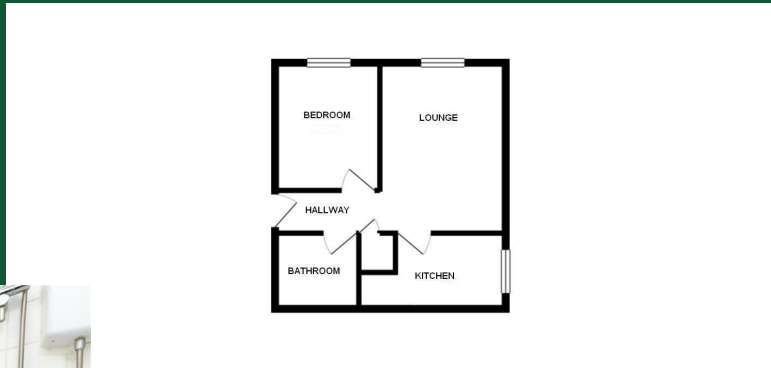




Bedford Road, Sandy

£725

- One Bedroom First Floor flat
- Deposit £801
- Council Tax: A
- Close to town Centre
- Deposit free option available - Flatfair
- Available May
- Allocated parking space
- EPC: D



Viewings

PLEASE REQUEST APPLICATION FORM TO BE CONSIDERED TO VIEW

Council Tax Band

A
EPC Rating:
D

Energy Efficiency Rating		Current	Potential
<i>Very energy efficient - lower running costs</i>			
(92 plus) A			
(81-91) B			79
(69-80) C		67	
(55-68) D			
(39-54) E			
(21-38) F			
(1-20) G			
<i>Not energy efficient - higher running costs</i>			
England & Wales		EU Directive 2002/91/EC	