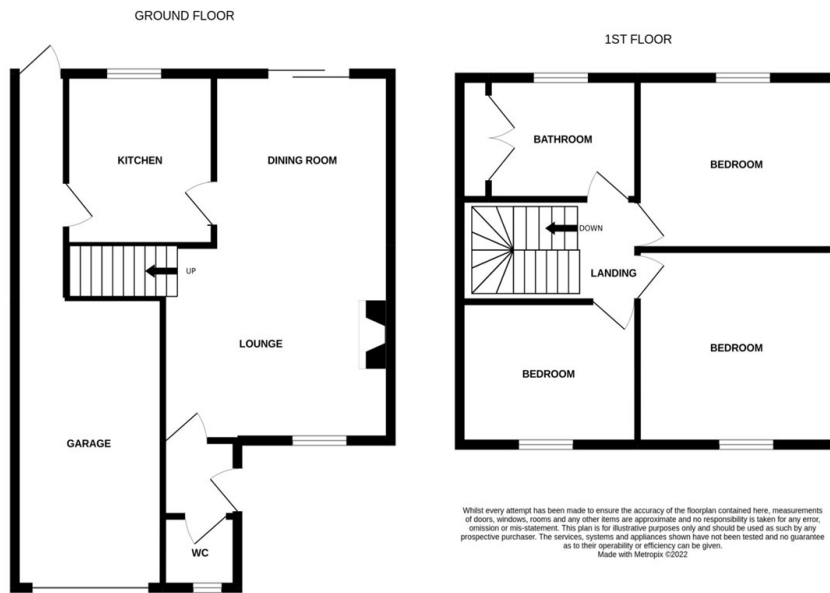




3 Maple Court, Gamlingay, Sandy, SG19 3LX

Asking Price £315,000

- Oil heating
- Three bedrooms
- Enclosed rear garden
- Viewing Highly recommended
- Four piece family bathroom
- Garage
- Well presented
- Off Road Parking
- Popular village location
- Cul de sac location



Directions

Viewings

Viewings by arrangement only. Call 01767 691122 to make an appointment.

Council Tax Band

C

EPC Rating:

D

Energy Efficiency Rating		Current	Potential
<i>Very energy efficient - lower running costs</i>			
(92 plus)	A		
(81-91)	B		82
(69-80)	C		
(55-68)	D	62	
(39-54)	E		
(21-38)	F		
(1-20)	G		
<i>Not energy efficient - higher running costs</i>			
England & Wales		EU Directive 2002/91/EC	